

■ Walt Disney's Comics and Stories – Vol. 18 No. 2 (November 1955)

Evaluation Date: March 31, 2026

Summary of Observations

This comic presents as a **very attractive, well-preserved mid-1950s Silver Age copy**, particularly notable for its **strong original gloss, vibrant cover and interior color, and solid overall structure**. The front cover lies flat, remains securely attached, and shows no evidence of splitting or separation. Interior pages display **above-average color saturation** with comparatively **light oxidation** for the period, and the paper retains good flexibility without brittleness.

When the **spine, centerfold, and staple photographs are examined together**, both original staples are confirmed present and holding the book securely. However, **both staples exhibit visible rust/oxidation**, consistent in appearance and darker than typical light, age-only oxidation. Despite this, there is **no evidence of staple pull-through, tearing, or page detachment**, and there is no observable rust migration staining beyond the immediate staple areas.

The most significant non-staple defect is a **disturbance at the top-left corner of the back cover**, which appears irregular and inconsistent with normal handling wear. This area shows characteristics consistent with either minor material loss, surface abrasion, or an old edge disturbance, but it does not penetrate through to interior pages. Overall, aside from the staple corrosion and the localized back-cover issue, this is a **very strong, visually appealing copy**.

Front Cover — Observations (IMG_2121)

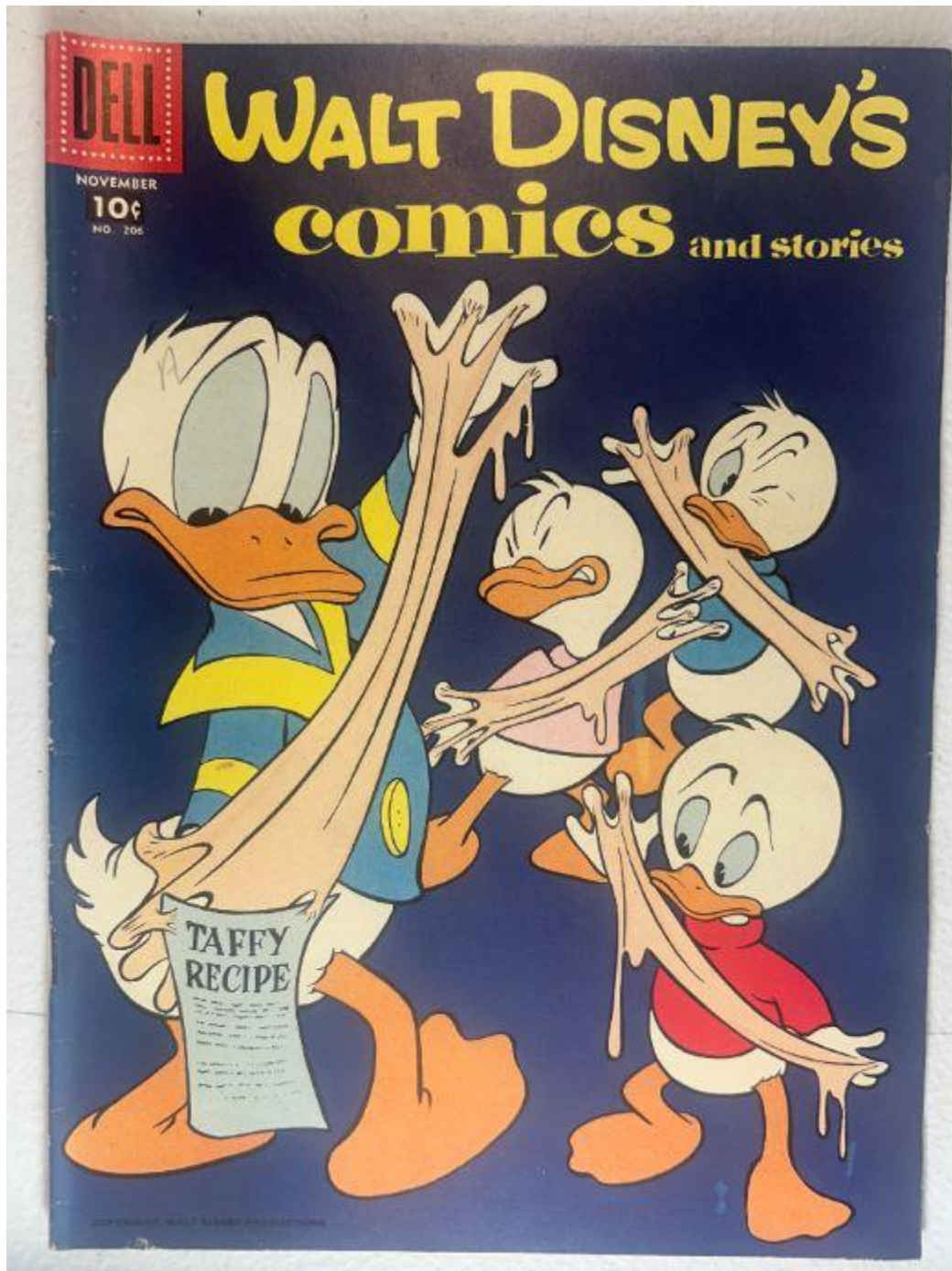
Walt Disney's Comics and Stories – Vol. 18 No. 2 (November 1955)

Photo Condition & Quality

Clear, high-resolution image showing the full cover, all edges, corners, and spine.

Scene & Composition

Donald Duck stretches taffy while Huey, Dewey, and Louie reach toward it, set against a deep blue background. Masthead reads *Walt Disney's Comics and Stories*, with issue text **November – No. 206 – 10¢**.



Findings

- **Strong original surface gloss present**, producing even sheen across the cover.
- **Minor edge wear**, shallow and evenly distributed.
- **Light corner rounding**, not visually disruptive.
- No significant creasing or surface breaks observed.

Color & Printing Quality

Colors remain rich and saturated; black linework is sharp and well defined.

Paper & Structural Notes

Cover stock remains firm and securely attached.

Overall Impression

Front cover is **clean, glossy, and visually excellent.**

Back Cover — Observations (IMG_2122)

Walt Disney's Comics and Stories – Vol. 18 No. 2 (November 1955)

Photo Condition & Quality

Clear image showing the full back cover advertisement and all corners.

Scene & Composition

Seven-Up advertisement with illustrated panels and promotional text.

Findings

- **Abnormal wear/disturbance at the top-left corner**, appearing irregular compared to normal corner rounding.
- **Light surface soiling** elsewhere, minimal and uniform.
- Remaining edges and corners are well preserved.

Color & Printing Quality

Advertisement colors remain strong and legible.

Paper Condition

Light, even oxidation typical of mid-1950s paper stock.

Overall Impression

Back cover is generally clean, with the **top-left corner defect standing out as the primary surface issue**.

Interior Pages — Observations (IMG_2123–IMG_2127)

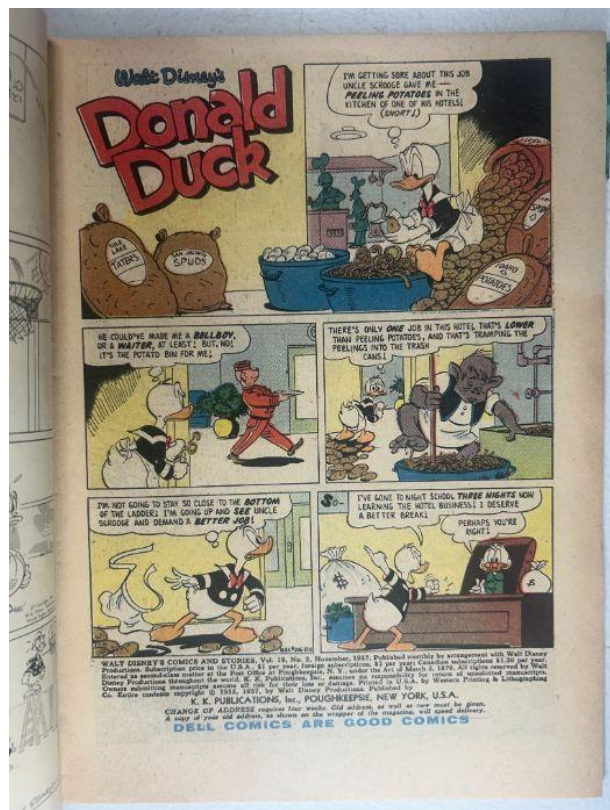
Walt Disney's Comics and Stories – Vol. 18 No. 2 (November 1955)

Photo Condition & Quality

Interior pages photographed clearly with margins and gutters visible.

Page Color

Cream to light tan.



Findings

- **No full-thickness interior tears observed** in the sampled pages.
- **Minor edge wear** on a few pages only.
- **Corner creasing**, light and not intruding into panels.
- **Interior color is notably strong** for the period.

Color & Printing Quality

Interior colors remain vibrant; halftones and linework are crisp.

Structural Notes

All interior pages remain firmly attached at both staples.

Overall Impression

Interior pages are **clean, colorful, and structurally sound**.

Centerfold — Observations (IMG_2128)

Walt Disney's Comics and Stories – Vol. 18 No. 2 (November 1955)

Photo Condition & Quality

Clear two-page image showing fold and staple alignment.



Findings

- **Both staples clearly visible and seated through the centerfold.**
- Fold shows mild age toning only.
- **No centerfold tears or separation observed.**

Overall Impression

Centerfold is **secure and intact.**

Spine — Observations (IMG_2129)

Walt Disney's Comics and Stories – Vol. 18 No. 2 (November 1955)

Photo Condition & Quality

Side-profile image clearly showing spine thickness and alignment.



Findings

- **Spine remains straight and well aligned.**
- **No splitting, tearing, or paper loss** observed.
- Wear limited to very minor scuffing near staple areas.

Overall Impression

Spine condition is **strong and above average.**

Upper Staple — Observations (IMG_2130)

Walt Disney's Comics and Stories – Vol. 18 No. 2 (November 1955)

Photo Condition & Quality

Clear macro image of the upper staple area.



Findings

- **Upper staple present and intact.**
- **Moderate to heavy rust/oxidation visible**, darkened and uneven.
- Surrounding paper remains intact with no pull-through.

Overall Impression

Upper staple is **structurally functional but significantly oxidized.**

Lower Staple — Observations (IMG_2131)

Walt Disney's Comics and Stories – Vol. 18 No. 2 (November 1955)

Photo Condition & Quality

Clear macro image of the lower staple.



Findings

- **Lower staple present and intact.**
- **Moderate rust/oxidation present**, similar in character to the upper staple.
- Surrounding paper remains sound.

Overall Impression

Lower staple remains functional despite visible corrosion.

Brittleness Test — Observations (IMG_2132)

Walt Disney's Comics and Stories – Vol. 18 No. 2 (November 1955)

Photo Condition & Quality

Clear macro image showing page-corner flex.



Findings

Paper flexes smoothly with minimal stiffness and **no cracking or flaking**.

Overall Impression

Paper is **flexible and not brittle**.